

Each class has its own open space, and these three circles create the single central plaza.

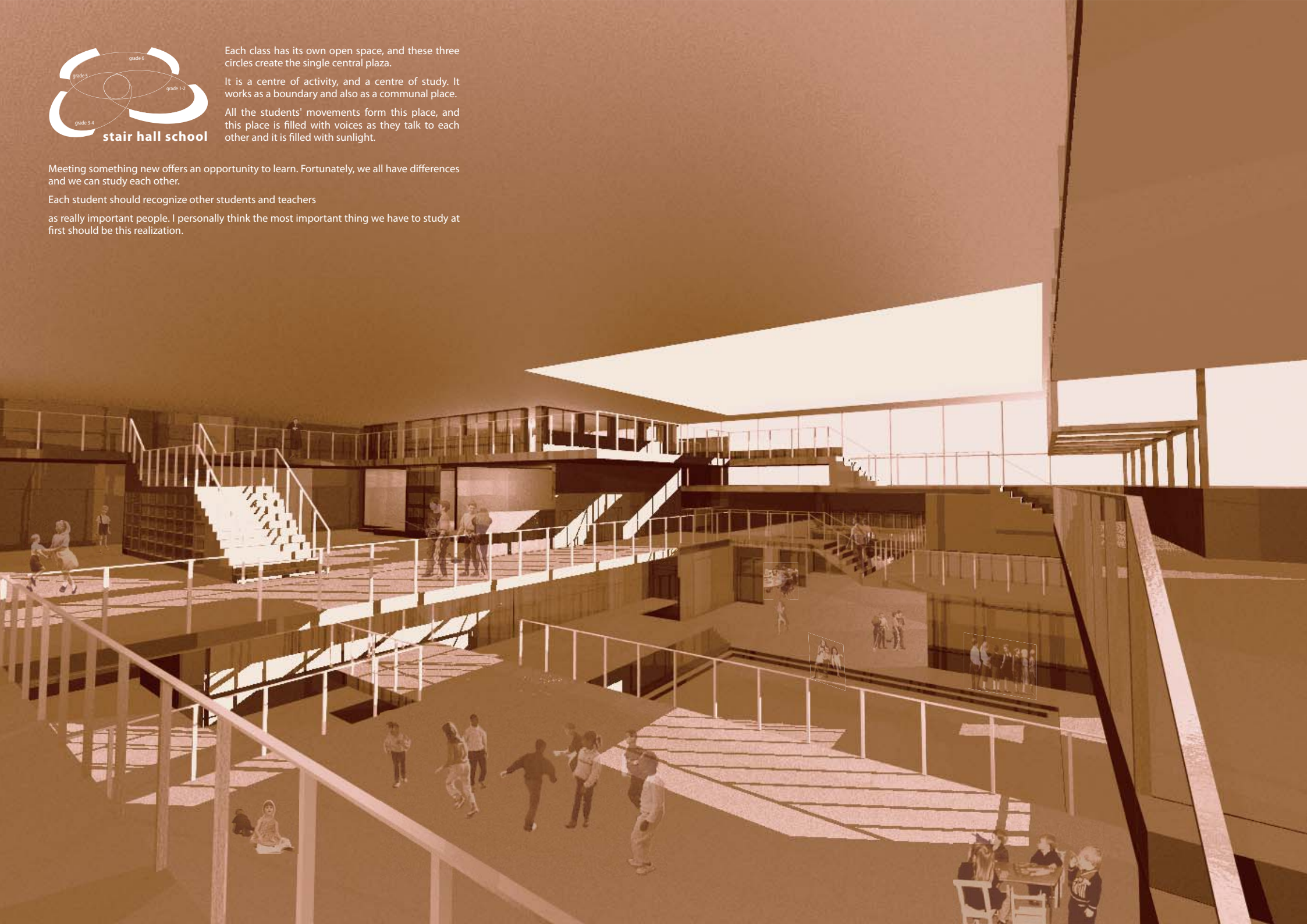
It is a centre of activity, and a centre of study. It works as a boundary and also as a communal place.

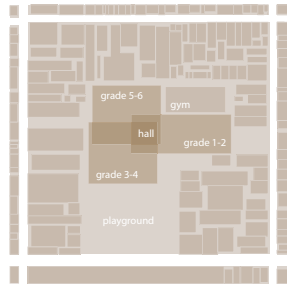
All the students' movements form this place, and this place is filled with voices as they talk to each other and it is filled with sunlight.

Meeting something new offers an opportunity to learn. Fortunately, we all have differences and we can study each other.

Each student should recognize other students and teachers

as really important people. I personally think the most important thing we have to study at first should be this realization.





The site

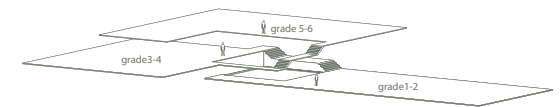
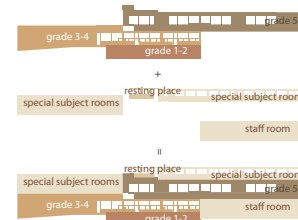
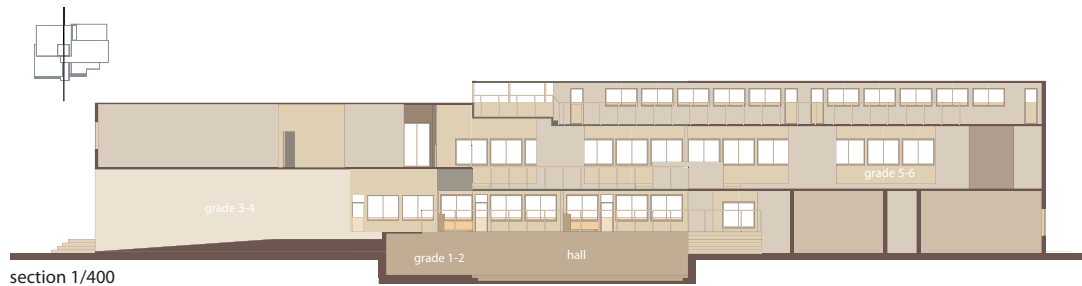
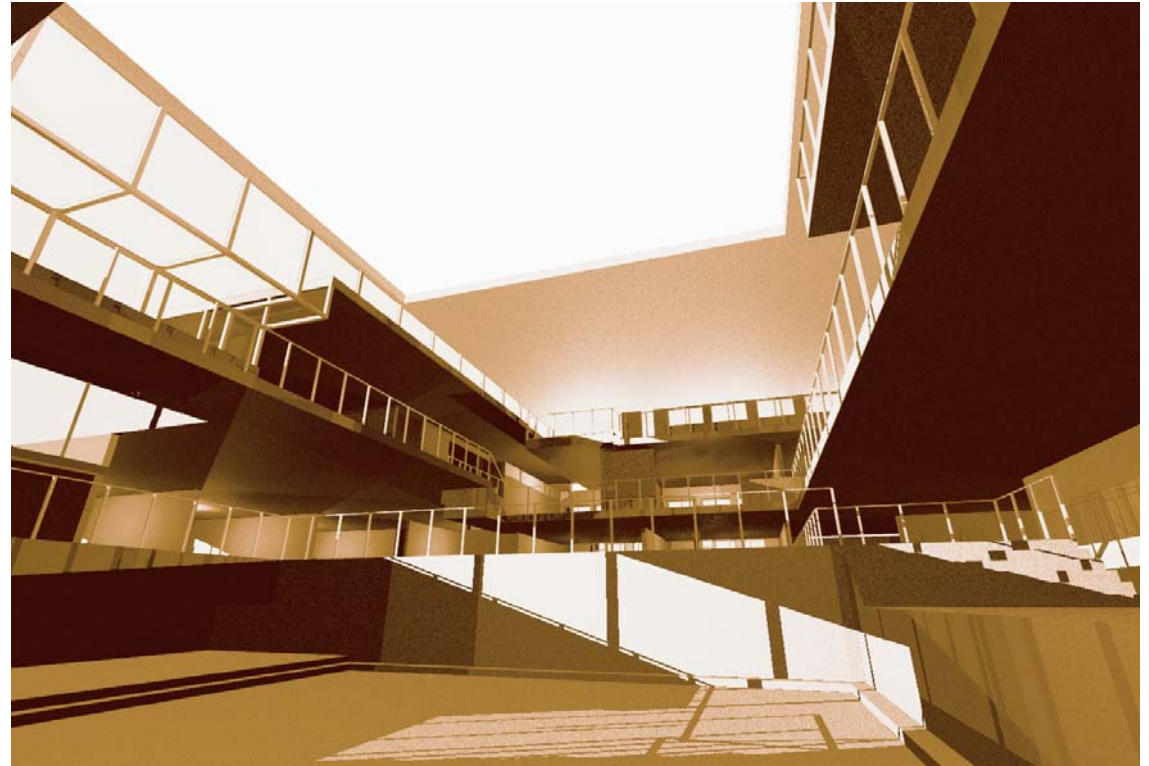
Though the site is near the main street of Kyoto, there are mainly small, low-rise, old buildings. Like these buildings, the site itself also doesn't have vast space for the huge amount of the students (it has to serve for more than 600 students.), because it is near the city centre. Also, for keeping cityscape and protecting the environment of the houses surrounding this site, the primary school should be low rise.

To overcome this dilemma, and to go with the cityscape, I chose to construct this building on the traditional grid of Kyoto city (north-south and west-east), which is like a chessboard.

To divide and to connect

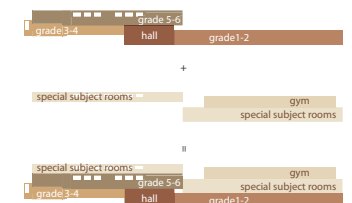
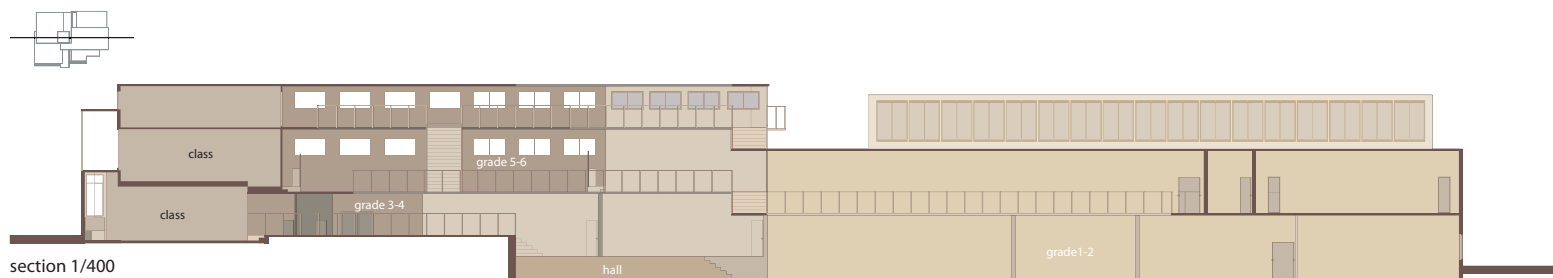
In primary school, mental or physical differences between grades are so big. So naturally they should be divided to some extent.

Also there needs to be connections with students from other years. Around the central plaza, each grade has their central place, in other words, open space. Students study and play around this centre and their movement itself makes this central space.



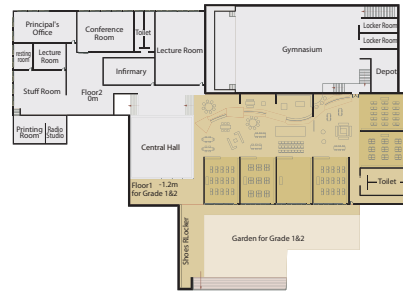
The system of floors

Floor levels increase by 1200mm each and stairs create the 3 dimensional plaza at the centre of the school.



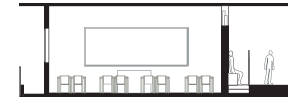


Floor1&2 1/800



Floor1&2

Class Rooms for grade 1&2 students are on Floor 1 and the floor is 1.2 m lower than the ground level. These classrooms have a garden, which is located to the side of classrooms, and the garden can be used not only as a playground but also as an outside classroom.

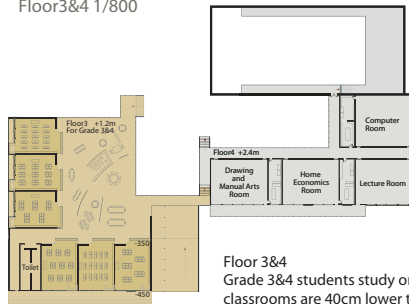


Half separated space

Differences of floor levels slightly separate classrooms and the open area. Between these, there are seats and movable partitions and this space can be used for more individual use. The seats belong to the classrooms and also open space.



Floor3&4 1/800

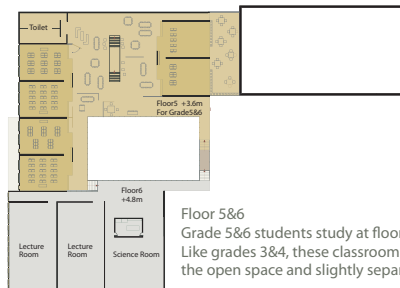


Floor 3&4
Grade 3&4 students study on floor3 and their classrooms are 40cm lower than the open space.

Window seat
Each classroom has a window seat.
What do students say to each other in the place covered in sunlight?



Floor5&6 1/800



Floor 5&6
Grade 5&6 students study at floor 5. Like grades 3&4, these classrooms are 30 cm higher than the open space and slightly separated from it.

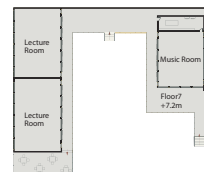


Between classes

Between each two classes, washstands are installed. These spaces are used as communal space for two classes.



Floor7 PLAN 1/800



Floor7
The Floor 7 is mainly used for special classrooms for Grades 5&6. The Music room is just beside the central hall, and from this area music will reach everywhere in the school with sunlight.



Bookshelf-stair

At the centre of the open space, there is a stair well and this is also used as small library. The bookshelf-stair case divides the space and combines the students.